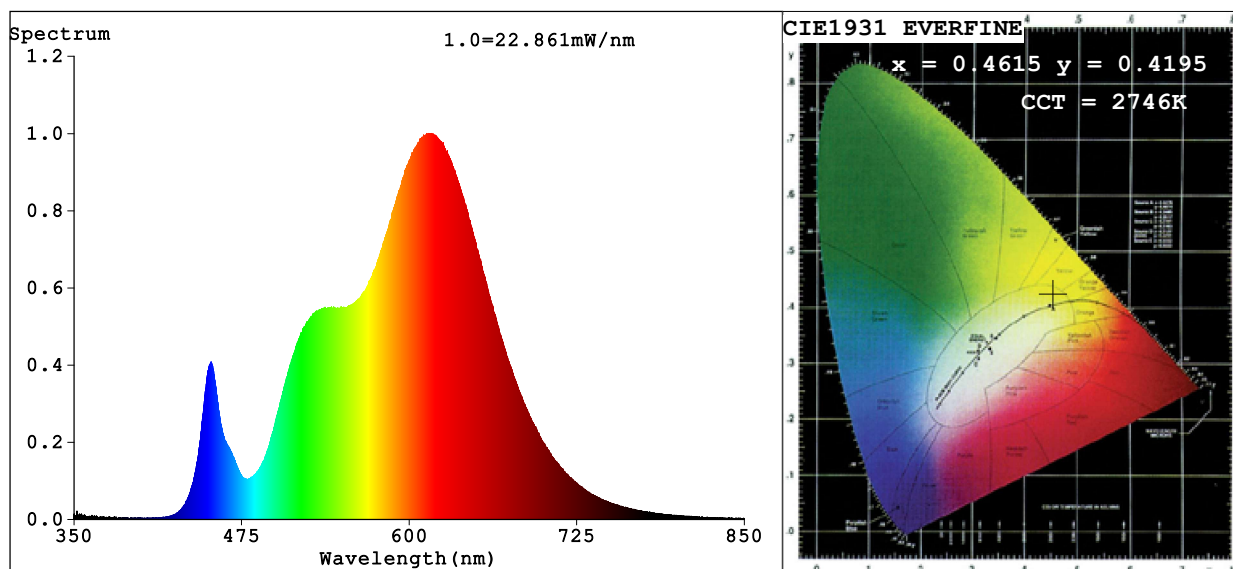


## Spectrum Test Report



### Color Parameters:

Chromaticity Coordinate:  $x=0.4615$   $y=0.4195$   $u'=0.2596$   $v'=0.5309$

CCT=2746K (Duv=0.0031) Dominant WL:Ld =583.0nm Purity=64.5%

Ratio:R=26.1% G=72.1% B=1.8%; Peak WL:Lp=613.1nm FWHM=144.2nm

Render Index:Ra=90.9 CRI=86.7 TM30:Rf=90 Rg=98

R1 =92 R2 =94 R3 =96 R4 =94 R5 =91 R6 =94 R7 =91

R8 =75 R9 =41 R10=85 R11=96 R12=75 R13=93 R14=96 R15=84

### Photo Parameters:

Flux = 1031 lm Eff. : 95.38 lm/W Fe = 3.302 W

### Electrical parameters:

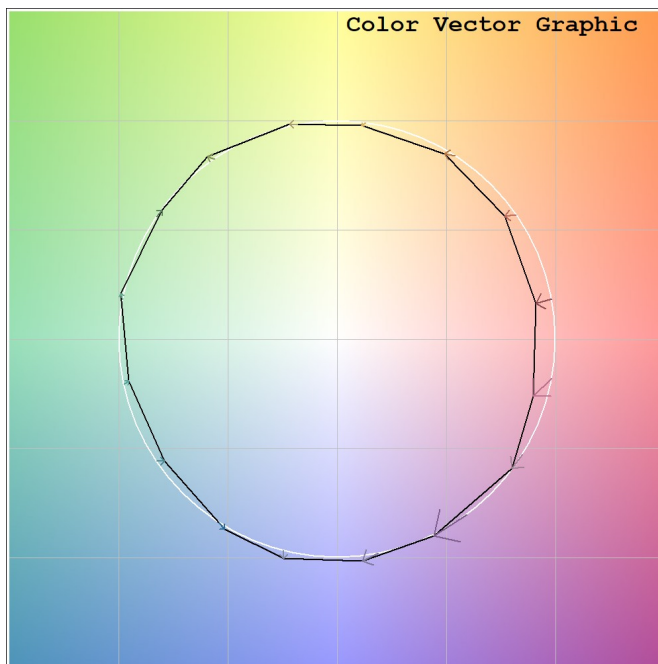
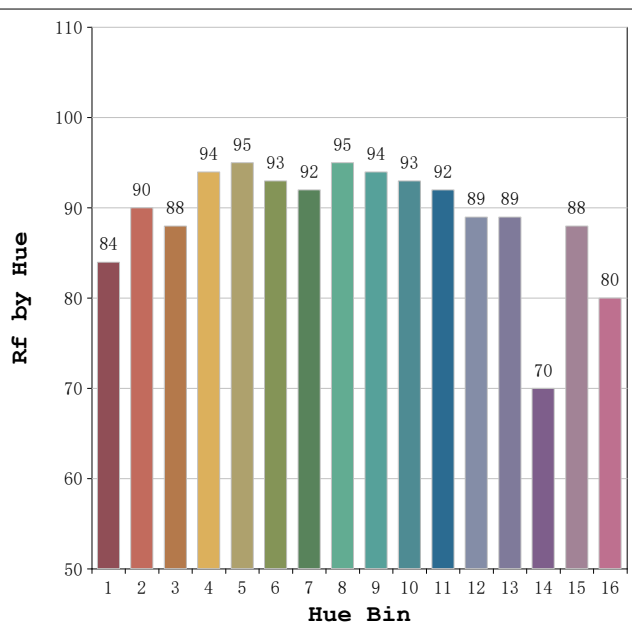
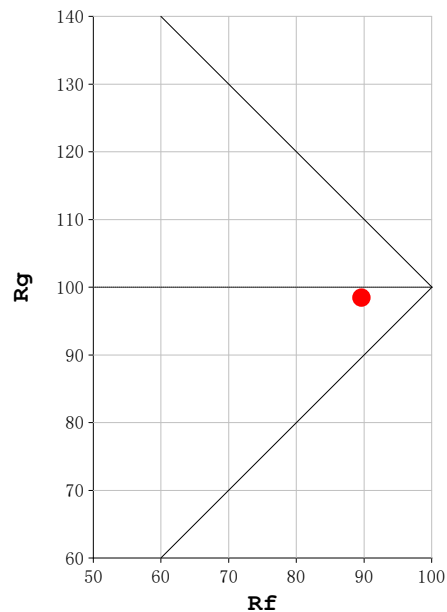
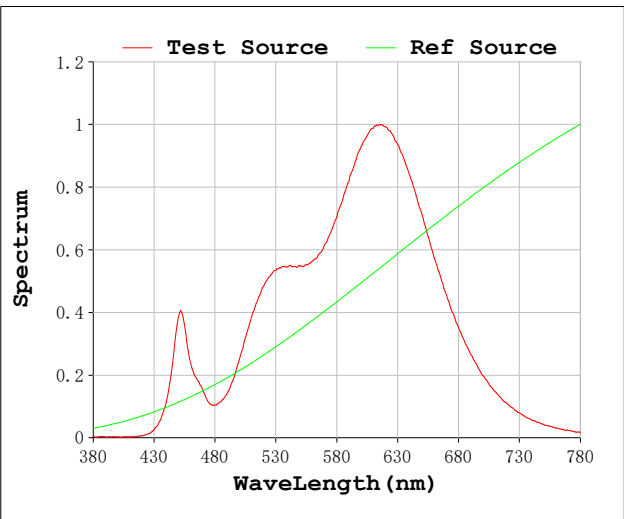
V = 23.998 V I = 0.4506 A P = 10.81 W PF = 1.000

Status: Integral T = 1031 ms Ip = 44962 (69%)

Model:Ecoled COB Roll to roll  
Tester:Sergio Carneros  
Temperature:20Deg  
Manufacturer:Luz Negra

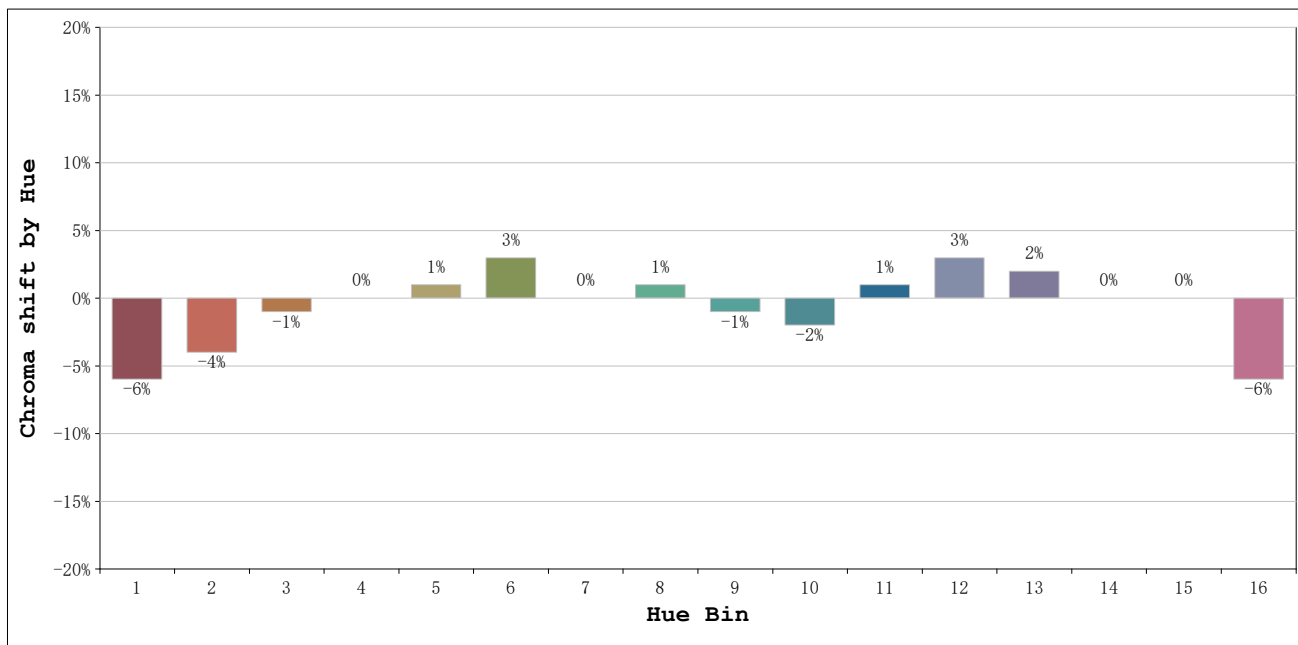
Number: 31.263  
Date:2025-06-17 08:26:38  
Humidity:50%  
Remarks:100cm de tira flexible

**Rf: 90**      **CCT: 2746 K**      **u': 0.2596**  
**Rg: 98**      **Duv: 0.0031**      **v': 0.5309**



Model:Ecoled COB Roll to roll  
 Tester:Sergio Carneros  
 Temperature:20Deg  
 Manufacturer:Luz Negra

Number: 31.263  
 Date:2025-06-17 08:26:38  
 Humidity:50%  
 Remarks:100cm de tira flexible



			Graphic shift(%)	
Hue Bin	Hue Angle	Rf	Chroma	Hue
1	0.0° - 22.5°	84	-6	0
2	22.5° - 45.0°	90	-4	2
3	45.0° - 67.5°	88	-1	5
4	67.5° - 90.0°	94	0	2
5	90.0° - 112.5°	95	1	3
6	112.5° - 135.0°	93	3	2
7	135.0° - 157.5°	92	0	-3
8	157.5° - 180.0°	95	1	-1
9	180.0° - 202.5°	94	-1	0
10	202.5° - 225.0°	93	-2	2
11	225.0° - 247.5°	92	1	4
12	247.5° - 270.0°	89	3	1
13	270.0° - 292.5°	89	2	-7
14	292.5° - 315.0°	70	0	-17
15	315.0° - 337.5°	88	0	-7
16	337.5° - 360.0°	80	-6	-9

Model:Ecoled COB Roll to roll  
 Tester:Sergio Carneros  
 Temperature:20Deg  
 Manufacturer:Luz Negra

Number: 31.263  
 Date:2025-06-17 08:26:38  
 Humidity:50%  
 Remarks:100cm de tira flexible